

TPS

— VALPARAÍSO —



Terminal under Concession to Neltume Ports & Contug Terminals (30 years) since 2000-2029



Valparaíso Bay

TERMINAL PACÍFICO SUR VALPARAÍSO S.A.



Puerto
Valparaíso

TFV

TPS

TPS
— VALPARAÍSO —

SHELTERED BAY | NATURAL CONDITION + MOLO COAT

- 95% of severe weather fronts are in a S-SW direction.
- Absence of Currents.
- Fewer tugs per maneuver (1.2 Berth/1.1 Sail).



LOA 333

LOA 333

LOA 185

QUAY 1
740 mts.

DRAFT 14.1

QUAY 2
268 mts.

DRAFT 9.4

2.1 km



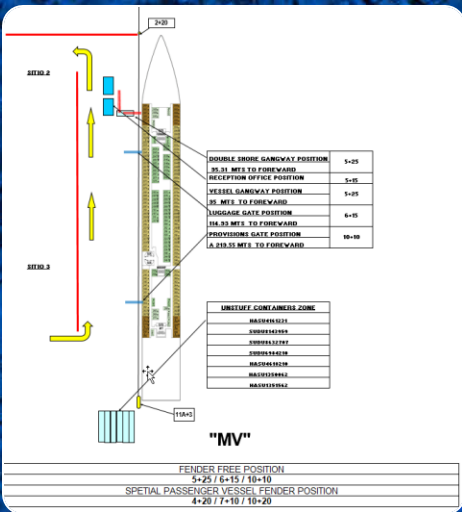
LOA 333

LOA 185

DRAFT 14.1

DRAFT 9.4

Vessel quayside shelldoor plan



- Located in Valparaíso center.
- 2,5 km from TPS.
- 6.000m² for parking
- 4.300 m² for passenger facilities
- Direct connection with local city buses and metro.
- **5 minutes from bus station & downtown.**



MAIN TOURISTIC DESTINATIONS

TERMINAL PACÍFICO SUR VALPARAÍSO S.A.

Valparaíso

Valparaíso is the third largest metropolitan area in the country (population +800k). Located about 120 km northwest of Santiago.

It is also the major city, seaport, and educational and political center of the Region.

Valparaíso was declared a world heritage site based upon its improvised urban design and unique architecture.



Viña del Mar

Known as the **“Garden City”**, Viña del Mar is the fourth largest city of Chile (population +320k); and the city that allocates more resources to tourism in terms of hotel, music festivals, community embellishment over the country.

With many city landmarks, Viña del Mar offers a must-see destination for foreigners.



MAIN TOURISTIC DESTINATIONS

Santiago

Is the capital and largest city of Chile (population + 7MM).

It is the commercial, artistic, educational and political nucleus of the country; which in turn offers endless alternatives for tourists.

Santiago and the International Airport are 90 minutes away from Valparaíso.



TPS

— VALPARAÍSO —

